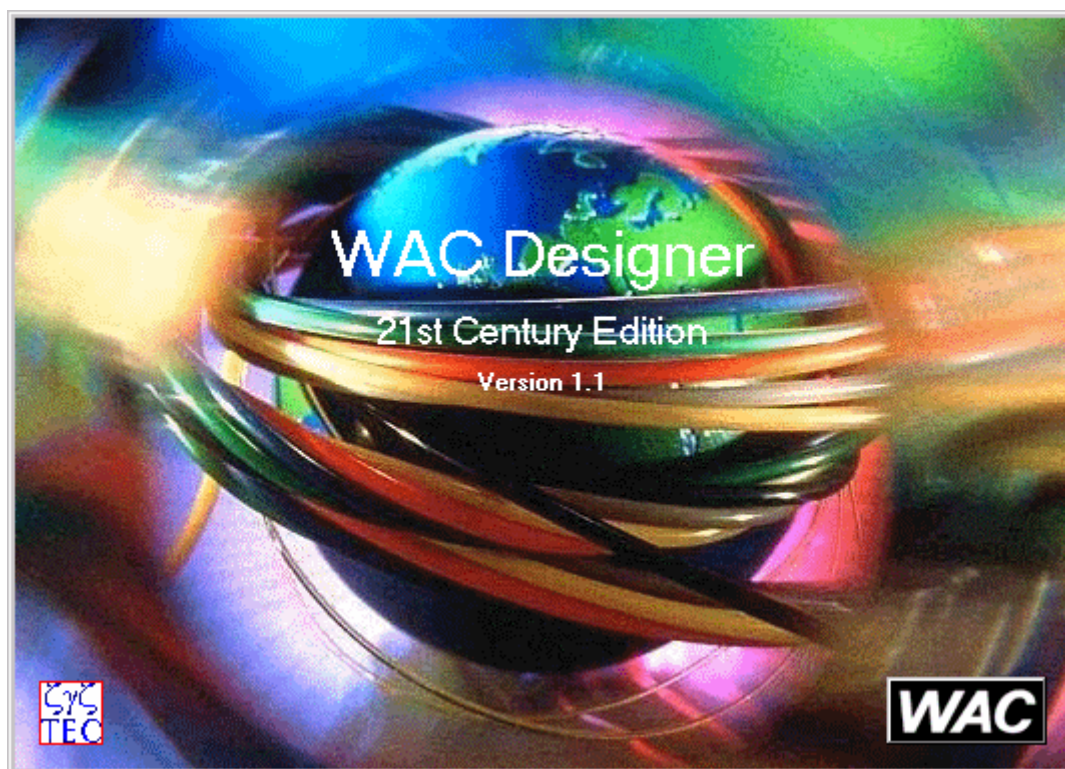


# WAC DESIGNER

## 21st Century Edition

### USER MANUAL



**Last update: 20.January,2004**

**Credits and copyright:**

**WAC DATA SERVICE CO., LTD.**

2-12-8 Nishimizuhodai – Saitama – Japan

Web: [www.wacdata.com](http://www.wacdata.com)

Copyright © WAC DATA SERVICE CO., LTD.

All Rights Reserved

**SYS TEC S.r.l.**

Via Romolo Gessi, 28 – 25135 Brescia – Italy

Tel. (+39) 030 8360200 – Fax (+39) 030 8360294

E-mail: [systec@systecsrl.com](mailto:systec@systecsrl.com)

Web: [www.systecsrl.com](http://www.systecsrl.com)

Copyright © SYS TEC S.r.l.

All Rights Reserved

## SUMMARY

Chapter 1.....	5
INTRO.....	5
1.1 About WAC Designer.....	5
1.2 Hardware & Software Requirement.....	5
Chapter 2.....	6
SETUP.....	6
2.1 Setup .....	6
2.2 KeySetup.....	6
2.3 Installed File.....	6
2.4 CD .....	7
2.5 Sample.....	7
Chapter 3.....	8
OVERVIEW OF WAC DESIGNER .....	8
3.1 Starting WAC Designer .....	8
3.2 Language change.....	9
3.3 Option setting .....	9
3.4 Treatment of the pattern colors .....	10
3.5 Open, Save and close pattern files .....	10
3.6 Image access .....	10
3.7 Undo and restore of graphical operation.....	11
3.8 Cut, Copy and past.....	11
3.9 Magnify and reduction .....	12
3.10 Grid .....	12
3.11 Cursor.....	12
Chapter 4.....	13
CREATING PATTERN WITH WAC DESIGNER .....	13
4.1 How to create a pattern for “Circular Knitting Machine” .....	13
4.2 How to create a fill pattern.....	17
4.3 How to create a selvedge pattern .....	18
Chapter 5.....	19
PAINTING TOOLS .....	19
5.1 Main function.....	19
5.2 Pen.....	20
5.3 Dropper .....	20
5.4 Line .....	20
5.5 Fill .....	21
5.6 Rectangle.....	21
5.7 Ellipse.....	21
5.8 Square.....	22
5.9 Circle.....	22
5.10 Diamond.....	23
5.11 Polyline .....	23
5.12 Curves .....	23
5.13 Spray .....	24
5.14 Edge Marking.....	24
5.15 Area Select .....	24
5.16 Text .....	25
5.17 Eraser .....	26

5.18 Color Change .....	26
5.19 Copy .....	27
5.20 Mirror .....	28
5.21 Rotate .....	28
Chapter 6.....	30
CIRCULAR KNITTING MACHINE .....	30
6.1 Properties .....	30
6.1.1 General.....	30
6.1.2 Pattern .....	31
6.1.3 Expansion.....	31
6.1.4 Option File .....	32
6.1.5 Machine Model .....	32
6.2 Machine Model .....	33
6.2.1 Model .....	33
6.2.2 Feature.....	34
6.2.3 Stripers .....	34
6.2.4 Selvedge .....	34
6.3 Expansion.....	34
6.3.1 Colors table .....	35
6.3.2 Pattern color list .....	35
6.3.3 Expansion area .....	35
6.3.4 Tucks point rules .....	35
6.3.5 Expansion modality “No inlay” .....	36
6.3.7 Selvedge area definition.....	38
6.3.8 Key Apply .....	38
6.4 Visualization modality .....	38
6.5 Colors .....	39
6.6 Control record .....	39
6.7 Stripers .....	39
6.8 Preview.....	40
6.9 Print.....	40
Chapter 7.....	42
PATTERNS FOR FILL AND SELVEDGE .....	42
7.1 Property .....	42
7.1.1 Main .....	42
7.1.2 Design .....	42
Appendix A.....	44
ERROR MESSAGES .....	44

# Chapter 1

## INTRO

This user manual represent an overview about Wac Designer software: it permits to use this software immediately. It shows information about the pattern tools and software function.

### 1.1 About WAC Designer

---

WAC Designer is a 32 bit Windows application, that permits to create patterns for textile machines. WAC Designer uses graphical tools to create pattern and several wizards allow to convert pattern into machine-format files.

Moreover, WAC Designer permits to import and export the most common file formats, e.g. bitmap pictures for Windows, so it can be used also as pictures converter to create machine format files.

### 1.2 Hardware & Software Requirement

---

WAC Designer can be installed on every PC with Windows 9x/ME/2000/XP O.S.

Also, PC must have installed a parallel port or USB port, in order to use the protection key, included in the software package.

Screen Resolution must be at least 800x600 at 65.536 colors (16 bit).

We suggest to use the resolution 1024x768 at 16,8 millions colors (32 bit).

# Chapter 2

## SETUP

### 2.1 Setup

---

To install the program, put the CD into your CD-ROM: the program will start automatically.

If your system doesn't support auto-run, click on Setup.exe on the main folder of CD.

Setup File uses Windows Installer to copy the necessary files on your system.

Windows Installer uses several wizards: to confirm the operations, click on "next" button to go to next step.

On Windows 2000 and XP, the application will ask you to allow the execution of WAC Designer to all users.



Windows Installer needs to remove all the preview versions of WAC Designer 21st Century.

### 2.2 KeySetup

---

KeySetup.exe installs the driver to read the protection key.

On "Setup Type" page we suggest to use the option "Complete".

### 2.3 Installed File

---

Setup will copy those files in your folder:

- |                      |                                  |
|----------------------|----------------------------------|
| • Adortl60.bpl       | WAC Designer library             |
| • Bcbsmp60.bpl       | WAC Designer library             |
| • Borlndmm.dll       | WAC Designer library             |
| • Cc3260mt.dll       | WAC Designer library             |
| • MacWiz.exe         | wizard for the treatment of data |
| • TextWiz.exe        | wizard for languages translation |
| • WACDes.exe         | WAC Designer application         |
| • WACDes.mdb         | database                         |
| • Palette\WACDes.wdp | WAC Designer colors palette      |
| • Resource\CKM.mdb   | CKM machine database             |

Setup will create this:

- |            |                          |
|------------|--------------------------|
| • Fill     | folder for fill patterns |
| • Palette  | WAC Designer main folder |
| • Patterns | Patterns folder          |

- Pictures Folder for pictures of different format
- Resource WAC Designer reserved folder
- Selvedge Selvedge folder

## 2.4 CD

---

The main files are Setup.exe and KeySetup.exe

In the folders “Common”, “program files” and “System32” there are the installation files.

In the folder “program files \SYS TEC\ WAC Designer 21st Century Edition” there are the files show in the 2.3 paragraph.

## 2.5 Sample

---

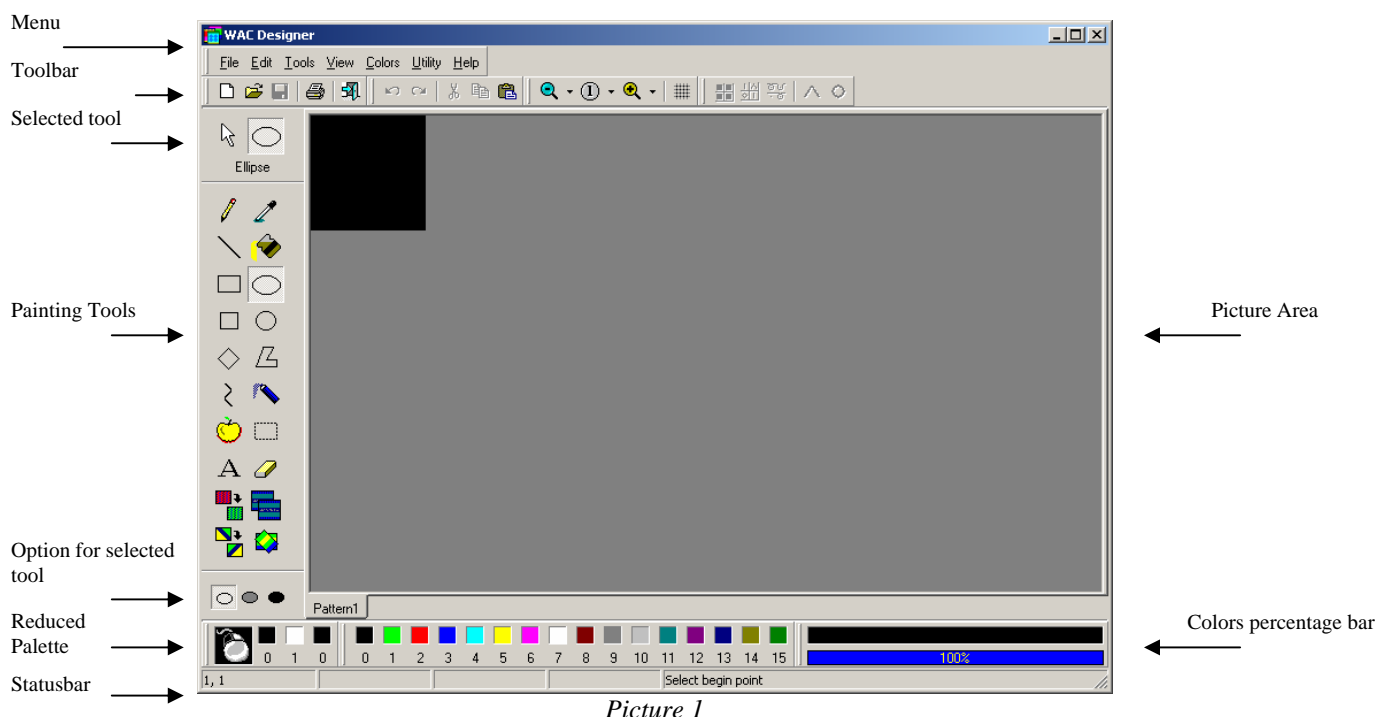
Not available for this version.

# Chapter 3

## OVERVIEW OF WAC DESIGNER

### 3.1 Starting WAC Designer

WAC Designer is a typical Windows application for painting.



#### **Menu**

To access the menu voices it is possible to use the mouse or a sequence of keys.

A list of the options is shown at the same time pressing the Alt key and the emphasized character of the single main voices, or the Alt key followed from the Enter key.

The visualized menu can be changed using the horizontal arrows.

In order to activate the single voice shown in the menu is necessary to press the correspondent emphasized character or the Enter key after to have the option selection through the vertical arrows. The important voices of the menu can be activated from keyboard pressing the associated keys, shown at the side of the text.

For more information on the activation of the menu voices please refer to the handbook of the operating system.

### ***Toolbar***

These buttons in the toolbar allows the quick activation of the options.

### ***Painting tools***

The “Painting tools” allow to create or modify a pattern.

You can find most of the common function of graphical application and specific function to define the textile item.

The selected instrument appears in the area and it can be disable using the “Cursors” button.

The other options of the selected graphical instrument appear under the list of graphical tools.

For detailed info about how to use, please check the Chapter “PATTERN INSTRUMENTS”.

### ***Reduced Palette and color percentage bar***

The reduced palette is composed by 16 typical colors of the window graphical application. Under each color appear the code number, very important for the pattern work.

Checking the button with a mouse pattern, you can see the selected color on the right and left click of the mouse and the color indicated by the cursor; you can see the three colors in the icon with the code number.

The colors used in the pattern are inserted in the color percentage bar; scrolling the cursor over the colors, you will see the percentage of each color.

A double click on a color in the percentage bar enables the “Gray” modality of pattern; a single click disable this function.

When this modality is enabled all the colors of the pattern are changed in grey with exception of the selected color: so you can easily identify the pattern area where the color is used.

See the paragraph 3.4 for more info of the colors.

### ***Status Bar***

In the status bar you can see information like cursor position and action to do in order to proceed with the selected graphical tool.

### ***Picture area***

In this area you can see a picture at time. The opened pattern can be selected choosing the respective label in the bottom.

Each pattern maintain its own feature of visualization, for example the zoom level and the grid activation.

---

## **3.2 Language change**

To change the language select in the “Utility” menu, the option “Language”, then select the desired language in the list.

Some word may remain in the original word even if you change the language because set from the software window.

---

## **3.3 Option setting**

Select from “Utility” menu the option “Option”, it is possible to set up the rows generates from the application and the colors used as bottom of new pattern and grid.

### 3.4 Treatment of the pattern colors

---

The WAC Designer application runs at 256 colors.

This limitation is necessary because we have to assign a particular textile function to each color and also to avoid errors to the user in the treatment of colors.

The codes from 0 to 255 given to single color help the user to define the textile item and to allow the execution of some automation.

Coming from another Windows application through the copy and past, the pattern colors are automatically adapted with the Wac Designer application.

At the end of the operation it is possible that some color are different between the original one.

### 3.5 Open, Save and close pattern files

---

The Wac Designer allows to open many pattern files at the same time, also of different format.



Selecting the file “Open” from “File” menu, will open a window where you can open follow format file:

- WAC Files (\*.wac)                      Pattern for machine that use WAC electronics
- Fill Patterns (\*.wdf)                      Pattern to use with function “Fill”
- Selvedge Patterns (\*.wds)                      Pattern to use for selvedge area of expanded design
- All Files (\*.\*)                              Pattern for machine that use WAC electronics



The format of “WAC Files” is not necessary, in fact if you choose the generic format “All Files”, the application will ready all the files as “WAC Files”.



This icon allows you to open a preview for the selected file (for detail check the charter of design).

Whit WAC Designer you can open the last files using the command “Reopen” from “File” menu.



To save the file, select “Save” from “File” menu. In this case the name and the destination will be the same. If you need to change them you have to you the command “Save as”.

The file can be close use the command “Close” from “File” menu.

The closing action is restricted to the selected file if the file is not the main in use, otherwise it will be closed all the pattern attached.

### 3.6 Image access

---

With WAC Designer you can import and export pattern as Bitmap of Windows in 256 colors format.



To import an image you have to select “import image” from “File” menu, then, you have to select the desired Bitmap file. The dimension of pattern will be automatically adapted to the imported image.



To export an image you have to select “export image” from “File” menu, then you have to define the name and the position of the file. The WAC Designer use as default destination file the destination selected in the options page.

### 3.7 Undo and restore of graphical operation

---

The WAC Designer maintain a trace of all modification made to design.



To undo the last command select “Cancel” from “Edit” menu.



To restore the last command select “Repeat” from “Edit” menu.

### 3.8 Cut, Copy and past

---

With WAC Designer it is possible to change the graphical images with other application, example with WAC Paint for Windows.

The function cut and copy are enabled only after selecting an area with the graphical instrument “Select Area”. You can also use the function “Select all” from “Edit” menu.



Cut, the image is cutted and placed in the Windows memory selecting the “Cut” from “Edit” menu. In this case the color of the area is replaced by the color selected in the right button of mouse.



Copy, the design is copied selecting “copy” from “Edit” menu.



Past, the image is past selecting “Paste” from “edit” menu.

Using the function image copy WAC Designer convert the colors checking in the palette the similar color. It is possible that the colors change during this operation. The function past enable automatically the graphical instrument “Select Area”.

## 3.9 Magnify and reduction

---

For each design, WAC Designer gives 6 factors for magnification and 4 factors of reduction. The zoom level could be define as follow:

- Selecting the desired factor from “Visualize” Menu
- Selecting the desired factor from enabling list clicking on the arrow of zoom button in the tool bar
- Clicking directly the magnify and reduction button of zoom factor in the tool bar
- Clicking the key “+” to magnify and “-” to reduce the factor of zoom.

The zoom factor is indicated from a scale and number called level of zoom. The level 1 indicate that the design is in scale 1/1.



The button in the middle of decrement and increment in the tool bar do not produce any effects in the zoom factor. The icon of this button correspond to the current zoom factor.

## 3.10 Grid

---

For each opened pattern with WAC Designer it is possible to enable the grid.

The grid color is define in the option setup following the follow rule: each five point, horizontal and vertical, to trace the grid line is used the color “Grid 2”; each ten point is used the color “Grid 3”.

The grid is not traced if the zoom is in 4 level.



The grid color can be choose from the reduced palette.

## 3.11 Cursor

---

WAC Designer gives two different type of cursor, the first can be used by mouse and the second can be used by keyboard.

The cursors used by mouse can be changed selecting “Cursor” from “visualize” menu.

The predisposed cursor is mentioned as:

- “System”
- “Cartesian axis”

The “System” cursor is the one used in Windows, usually is an arrow.

The “Cartesian axis” cursor is composed by two orthogonal lines that are extended to all the design.

The cursor used by keyboard is called “cross”, it can be enabled when the user need. To move the cursor you have to use the arrows on keyboard and to select the function you have to use the space bar.

The user can use firstly the mouse cursor and then for the same action can use the keyboard cursor, so it is possible to change the work modality; for example to make a line, if the user has some difficult with mouse, it can use the arrow keyboard for precision.



The coordinates shown in the status bar are referred to the last cursor position.

# Chapter 4

## CREATING PATTERN WITH WAC DESIGNER

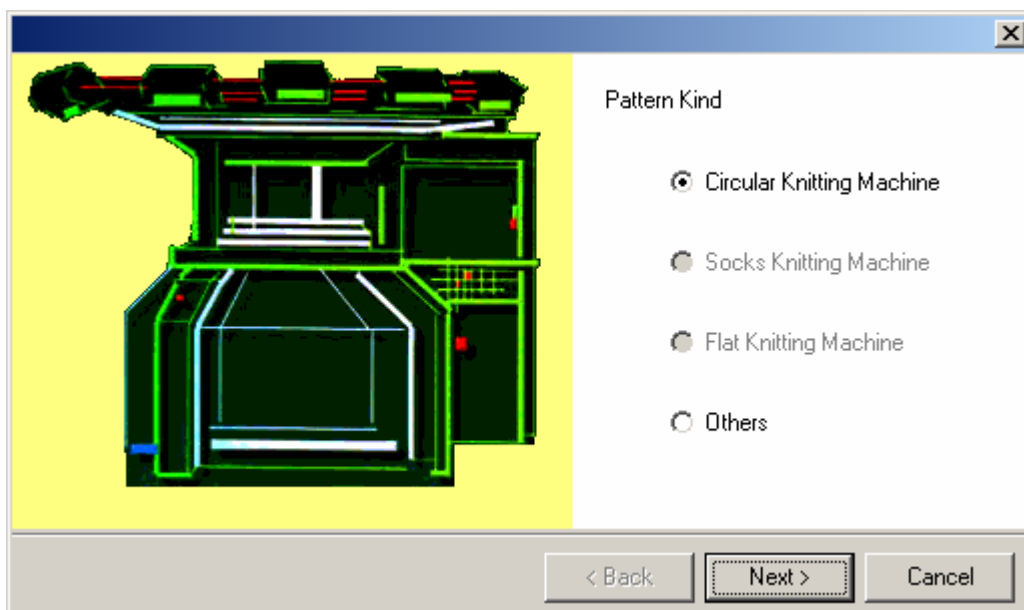
Wac Designer permits to create new textile patterns and new graphical pictures, usually last ones are part of textile patterns.

This chapter describes how to create patterns.



To create a new pattern, select “New” from “File” menu or click on this icon with your mouse.

A wizard menu (pic. 2) will help you.



Picture 2

### 4.1 How to create a pattern for “Circular Knitting Machine”

Patterns for “Circular Knitting Machine” are usually saved as .wac files, because they are a WAC private format files.

On the “Wizard” screen, select “Circular Knitting Machine” and then “Next”

On the new screen (pic. 3) you can input the data of your pattern.

Picture 3

Then click “Finish” to create the new pattern with your data.

With the data in picture 3, you will create a pattern called “Pattern1” with 100x100 points dimension: it will suitable for “AS-KS with selvedge and stripers” machine.



The information of your pattern can be changed before saving your file, but we suggest not to change the dimension of your pattern after you have created it.

The filename is automatically suggested and the program verify that any other files with the same name are already opened in the application.

After this, you will be able to use the graphical tools to create the pattern.

You can also import a Bitmap picture, using the “Import Image” function in “File” menu: we remember that the picture must be in 256 color format.

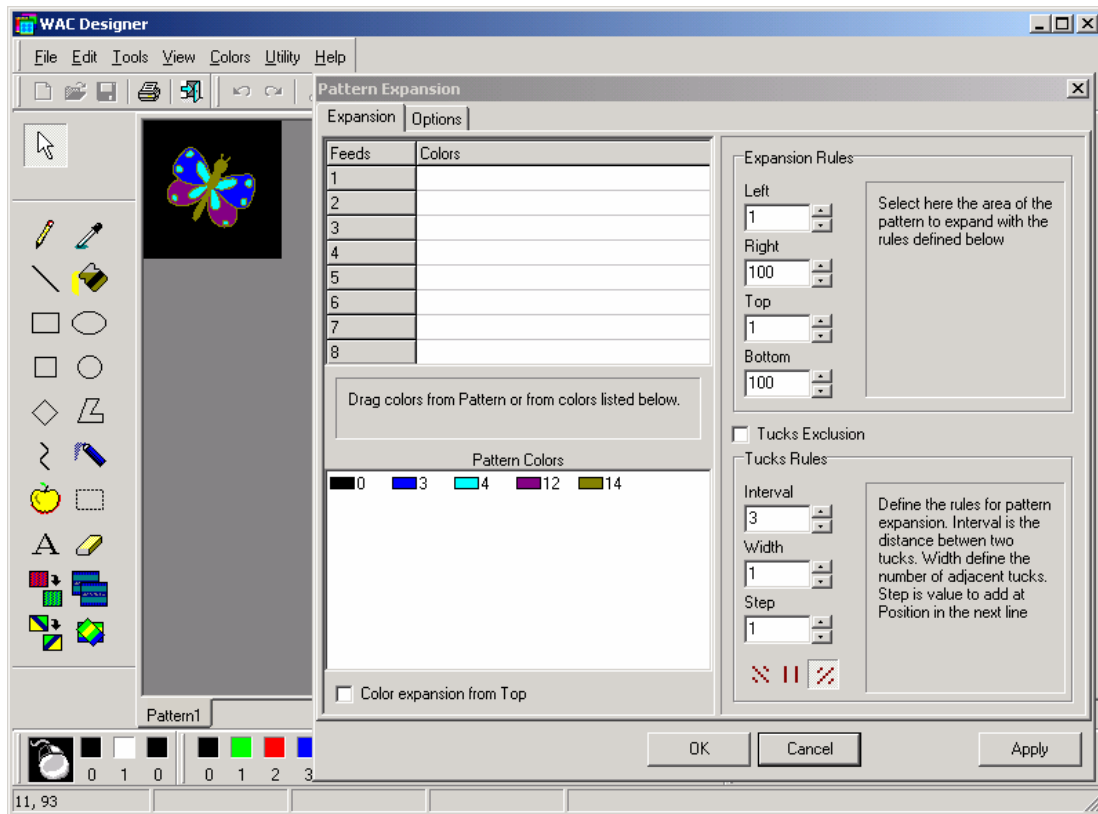
After you have created your picture, you must create the Expansion; using “Pattern Expansion” in “Tools” menu.

In the screen you can see the colors used on the pictures. (pic. 4)

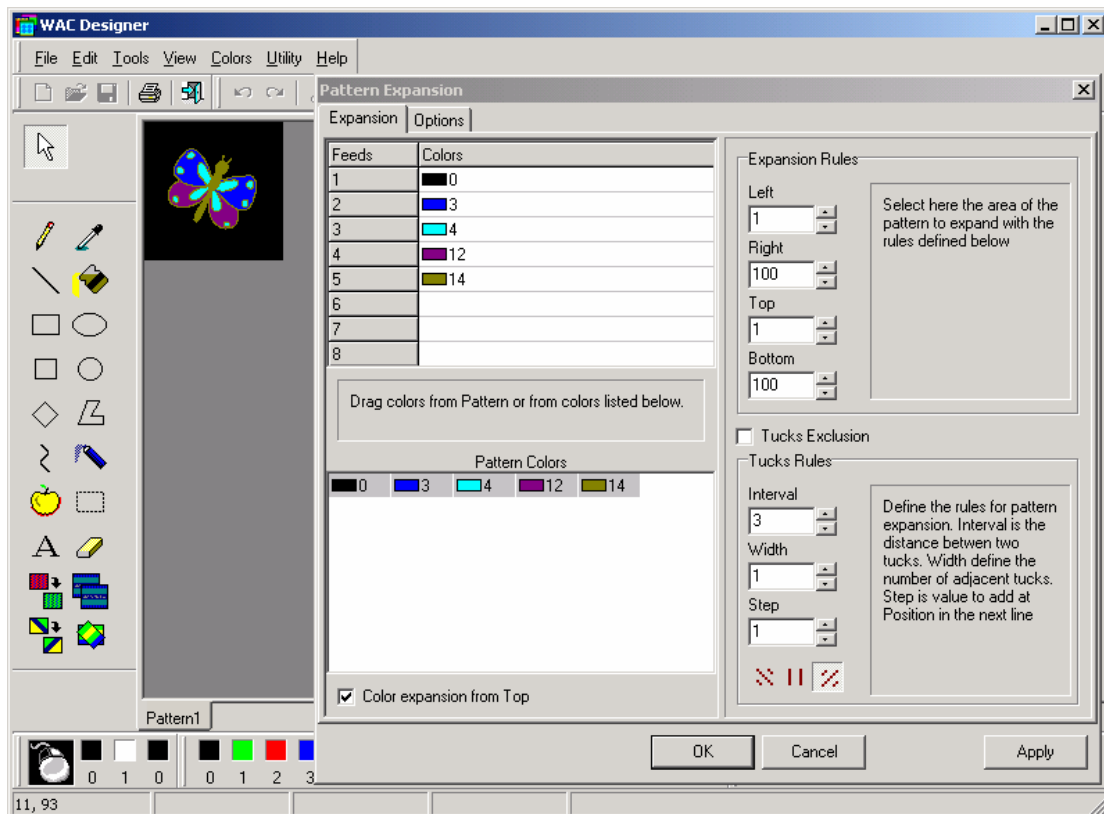
Each color must be assigned to a fee, showed in the left-top table.

You can use the “drag’n’drop”: click on the color and then drag it on your selected feed.

In picture 5 you can se an example.

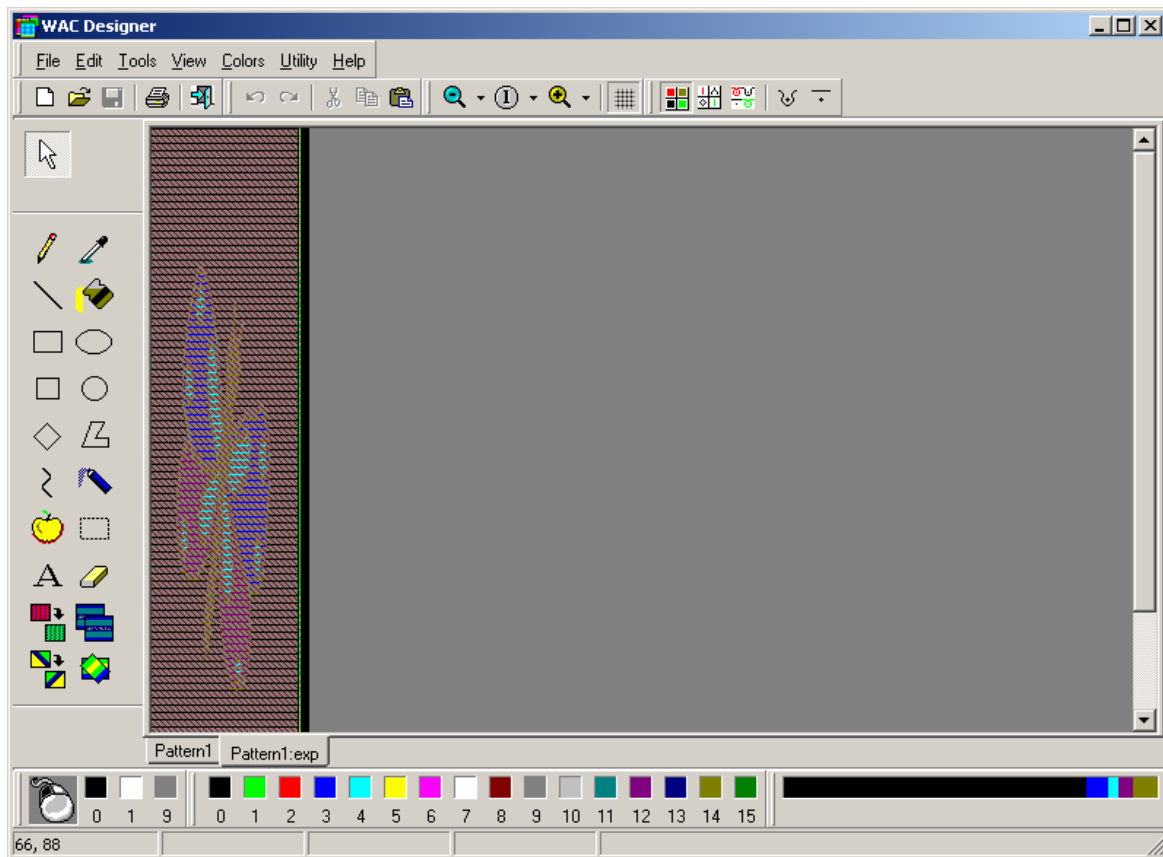


Picture 4



Picture 5

Then clicking on “OK” button, it will be create the expansion in a new window, using the same name of the pattern adding the suffix “.exp”

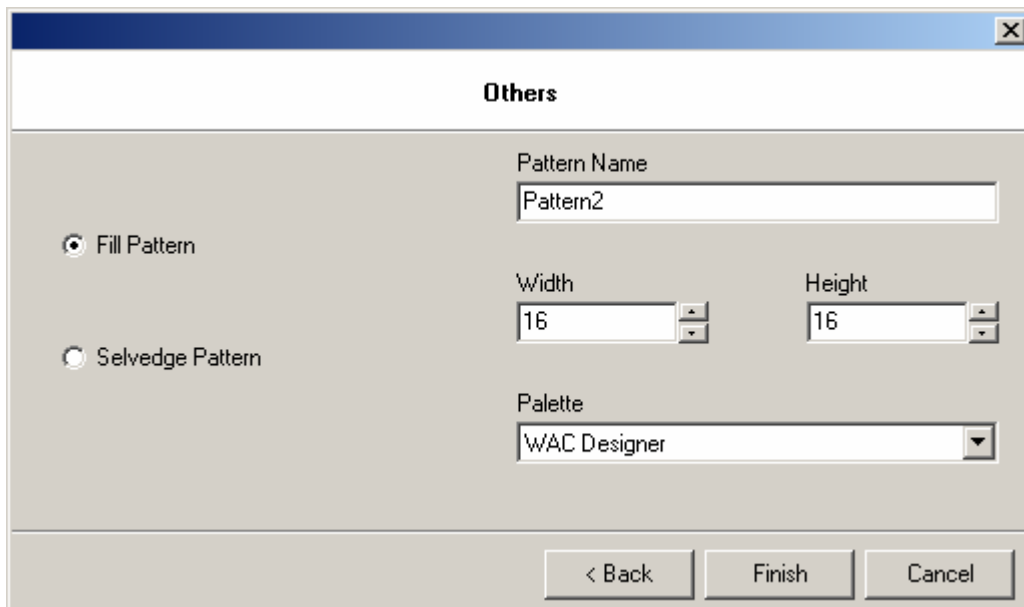


Picture 6

To create the WAC file it necessary to set the focus on the pattern window and then “Save” it. The file will be saved on the “WAC File” folder. Fro that folder you can save it on your disk.

## 4.2 How to create a fill pattern.

A Fill pattern is a WAC private property file and it usually call as “.wdf”.  
To create a Fill pattern, start the “Wizard”, select “Others” and then “Next”.  
In the new screen (pic. 7) select “Fill Pattern” and insert your data.



Picture 7

Click “Finish” to confirm your data and create the new pattern.



The information of your pattern can be changed before saving your file, but we suggest not to change the dimension of your pattern after you have created it.

The filename is automatically suggested and the program verify that any other files with the same name are already opened in the application.

After this, you will be able to use the graphical tools to create the pattern.

You can also import a Bitmap picture, using the “Import Image” function in “File” menu: we remember that the picture must be in 256 color format.

To create the Fill pattern you need to save it using the “Save” function.

IT will be create in the “Fill Pattern” folder: you can use this file when you select the “Fill” tool in the graphical toolbar.

---

## 4.3 How to create a selvedge pattern

---

A selvedge pattern is a WAC private property file and it usually call as “.wds”.

The operation to create a selvedge file is the same as a fill pattern file.  
But in the picture 7 you must select “Selvedge Pattern”.

To create the file, you the “save” option from “File” menu: the fill will be save on the “Selvedge Pattern” folder. Selvedge files can be use when you are creating a new expansion for circular knitting machine.

# Chapter 5

## PAINTING TOOLS

### 5.1 Main function

---

The drawing tools are accessed from the application main menu, under “Tools”, or simply via the buttons to the left of the window application.



The tools can only be used after a drawing area has been defined and activated.



No design instrument is enable if the button cursor or of cancel is visible. In this case any movement or action made on the design don't modify the same. In any case there are an update of the mouse position and keyboard position (see paragraph “Cursors”).

The selected instrument can be see in a n appropriate box, called “Activation” and the position is near the cancel button.

Each tool has a specific way of operating, nevertheless the following rules are valid for all the tools with a choice of one or two points of the drawing area:

- After the first click it is no longer necessary to keep the mouse button pressed down
- The color used is the one associated to the mouse button pressed
- The color associated to the other button is used for any filling in
- Both colors can be changed before concluding the operation in progress
- The colors can be chosen both from the small palette and from the complete one
- The options of the tool can be chosen before concluding the operation in progress
- It is possible to the zoom level during the operation in progress
- It is possible to scroll through the image during the operation in progress
- The tool options are shown in the area below the list of buttons of the tools
- The tool is deactivated by selecting another one or by selecting the cancel button
- The container of selection area is reported on the design clicking on the mouse outside the design or clicking the button Activation.



Any possible temporary trace – of a line for example – disappears by making the drawing smaller to below level 1; the operation in progress is not lost but it cannot be concluded before bringing the zoom to a level equal or greater than 1.

---

## 5.2 Pen

---



The Pen tool permits the drawing to be modified pixel by pixel. The color used is the one associated to the mouse button pressed.

By keeping the mouse pressed the pixels can be written in a continuous way.

### *Options*

No options are foreseen for this tool.

---

## 5.3 Dropper

---



The Dropper tool permits the acquisition of a color by taking it directly from the drawing. The mouse is positioned above one pixel of the drawing and mouse button is pressed. The color is associated to the button of the mouse pressed.

### *Options*

No options are foreseen for this tool.

---

## 5.4 Line

---



The Line tool permits a line to be marked between any two pixels of the drawing. The color used is the one associated to the mouse button pressed.

### *Options*

The style of the line can be chosen using the arrows located to the side of the style in use. The following styles are foreseen:

- Continuous line
- 1 to 1 starting from the first pixel of the line
- 1 to 1 starting from the second pixel of the line
- 2 to 1
- 1 to 2
- 3 to 1
- 1 to 3

## 5.5 Fill

---



The Fill tool permits an area to be filled with uniform color both with the color associated to the mouse key pressed or with a previously saved drawing.

### *Options*

A box appears in a dedicated area that shows the drawing to use for filling the area. To insert the fill drawing for the first time or to modify it, it is sufficient to click with the mouse inside this box. Fill with drawing is in any case to enabled by checking the box near the “with image” text. The drawing is chosen via a dialog window, specialised for fill images.



To make a contained image the user have to use only the WAC Designer application. For more detail see Chapter “How to create a contained design”.

## 5.6 Rectangle

---



The Rectangle tool permits a rectangle to be marked between any two pixels of the drawing

### *Options*

The shape can be marked in the following styles:

- Just a border with the color associated to the mouse button pressed
- Edge with the color of the mouse button pressed and filled with the color associated with the other mouse button
- Edge and internal area with the same color associated to the mouse button pressed

## 5.7 Ellipse

---



The Ellipse tool permits an ellipsis to be marked within the rectangular area identified by any two pixels of the drawing.

### *Options*

The shape can be marked in the following styles:

- Just the edge with the color associated to the mouse button pressed

- Edge of the color of the mouse button pressed and filling inside with the color associated to the other mouse button
- Edge and internal area of the same color associated to the mouse key pressed

## 5.8 Square

---



The Square tool permits a square to be marked between any two pixels of the drawing. The sides of the square have lengths coinciding to the shortest vertical and horizontal distances of the two pixels selected.

### *Options*

The shape can be marked in the following styles:

- Just a border with the color associated to the mouse button pressed
- Edge with the color of the mouse button pressed and filled with the color associated with the other mouse button
- Edge and internal area with the same color associated to the mouse button pressed

## 5.9 Circle

---



The Circle tool permits a circle to be marked in any area of the drawing. The circle can be marked both by defining the area in which it is included and by defining the radius, diameter or three points it must pass through.

### *Options*

The marking method can be one of the following:

- Circle included  
The area in which the circle must be included is defined; the diameter of the circle is the shortest length between the vertical and horizontal distances of the two pixels selected.
- Circle defined with the radius  
The first pixel selected becomes the centre of the circle, while the second point determines the length of the radius.
- Circle defined with the diameter  
The first pixel defined becomes a point of the circumference, while the second point selected determines the length of the diameter.
- Circle by three points  
Three points are selected through which the circumference must pass. When the first two points are established, the circle is marked only if it passes through all three points.

The shape can be marked in the following styles:

- Just the edge with the color associated to the mouse button pressed

- Edge of the color of the mouse button pressed and filling inside with the color associated to the other mouse button
- Edge and internal area of the same color associated to the mouse key pressed

## 5.10 Diamond

---



The Diamond tool permits a rhombus to be marked in the area between any two pixels of the drawing.

### *Options*

The shape can be marked in the following styles:

- Just the edge with the color associated to the mouse button pressed
- Edge of the color of the mouse button pressed and filling inside with the color associated to the other mouse button
- Edge and internal area of the same color associated to the mouse key pressed

## 5.11 Polyline

---



The Polyline tool permits marking a broken line in any area of the drawing. The action of the Polyline tool ends only by selecting the cancel button or by selecting another tool.

### *Options*

The style of the single lines constituting the broken line can be chosen using the arrows to the side of the style in use; it can also be modified while drawing a broken line.

The following styles are foreseen:

- Continuous line
- 1 to 1 starting from the first pixel of the line
- 1 to 1 starting from the second pixel of the line
- 2 to 1
- 1 to 2
- 3 to 1
- 1 to 3

## 5.12 Curves

---



The Curve tool permits a broken line to be drawn composed of curves in any area of the drawing. The color used is the one associated to the mouse button pressed. The action of the curve instrument ends only by selecting the cancel button or by selecting another tool.

### **Options**

No options are foreseen for this tool.

## **5.13 Spray**

---



The Spray instrument permits copying a predefined group of pixels into any area of the drawing. The instrument remains active after every copy. To deactivate it, select the cancel button or another instrument.

### **Options**

The group can have one of the following densities:

- Area 4 x 4 with 1 to 1 alternate
- Area 8 x 8 with the typical arrangement of the WAC Designer
- Area 8 x 8 with 1 to 1 alternate

## **5.14 Edge Marking**

---



The edge marking tool permits an area of any shape to be selected and copied in any other area of the drawing. The selection ends when the broken line determining the selection area is closed. Once selected, the area can be dragged, even several times, by holding the left mouse button down within the area itself. Once the final position has been determined, the copying phase can be concluded, in other words we can cancel the current selection by clicking outside the “extend” selection area, oppure sul pulsante di *attivazione*.



The “extend” selection area includes all the points of the rectangular area, also outside the broken line, that includes the effective area.

### **Options**

No options are foreseen for this tool.

## **5.15 Area Select**

---



The area select tool permits a regular, square or rectangular area to be selected, that can then be copied into another area of the drawing. Once selected, the area can be dragged, even several times, by holding the left mouse button down within the area itself. Once the final position has been determined, the copying phase can be concluded, in other words we can cancel the current selection by clicking outside the selection area, or selecting the activation button.



The Area Select tool permits copying and pasting drawings via the Windows memory exchange (clipboard). The colors of the drawings inserted in the clipboard are automatically adapted to the palette in use in the drawing. Drawings with more than 256 colors cannot be “pasted”. (See paragraph “Cut, copy and past”).



The Area Select tool is used to determine the action area of other instruments.

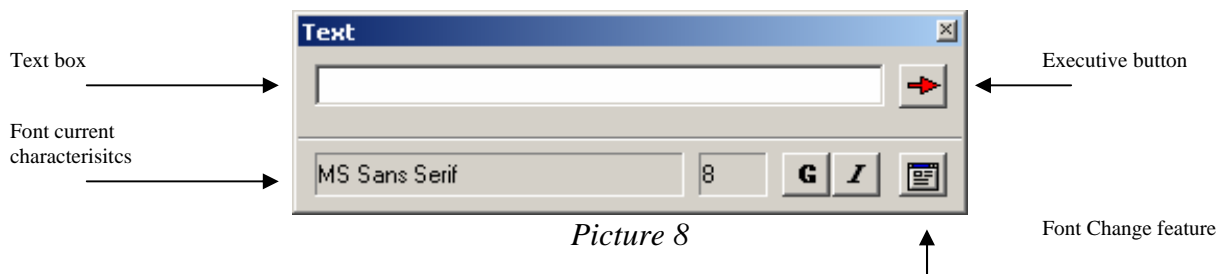
### Options

No options are foreseen for this tool.

## 5.16 Text



The text tool permits inserting text into the drawing. Enabling this instrument will appear the option window were to insert the text



The current text settings are displayed in this window. Using a dedicated button it is possible to select the feature of all the Fonts made available by the Windows operating system.

The text is transferred into the drawing inside a box by using the execution button. The text is then dragged, even several times, by holding the left mouse button down inside the box. Once the final position is determined, the text can be definitively copied by clicking with the mouse outside the box, or the activation button.

The feature of the text can be modified, even if it has already been transferred inside the box, by pressing the execution button again.

The tool remains active and permits a different text to be inserted.

### Options

This instrument has an appropriate options window (picture 8). The following information is respectively indicated in the area beneath:

- name of the Font in use
- character size
- bold activation
- italic activation



The options window remains at the forefront until the text instrument is cancelled. If it is closed for any reason, it can be re-enabled by pressing the tool button again.

## 5.17 Eraser

---



The Eraser tool permits portions of drawing to be erased. The color used is the one associated to the right mouse button. By holding the mouse button down cancellation can be performed continuously.

### *Options*

The “eraser” can be in one of the following sizes:

- Small (2 x 2)
- Medium (7 x 7)
- Large (10 x 10)

## 5.18 Color Change

---



The Color Change tool permits drawing colors to be changed. After establishing the color to change, and the replacement one, we press the execution button to make to color change in the drawing.



The Area Select tool can be used to determine the area in which to make the color change.

### *Options*

Two boxes are displayed in the options area separated by the execution button, represented by an arrow. The color to change is displayed in the left box while the replacement color is shown in the right box; the two colors are attributed by respectively pressing the left and right mouse buttons. The color can be acquired directly from the drawing or by choosing from the reduced or complete palette.

If the tool is activated after establishing a selection area, the color change action area can be determined by selecting the following options:

- Color change inside the area selected

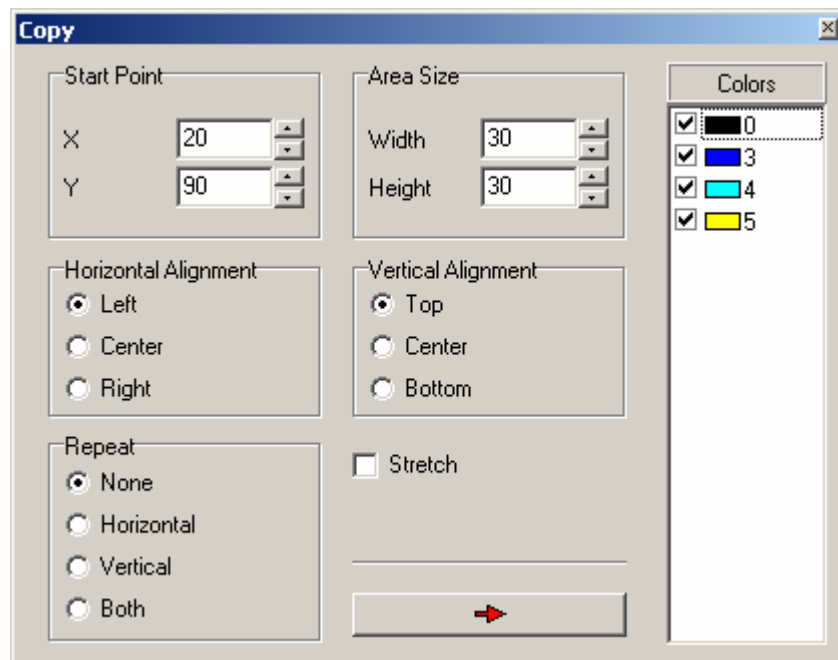
- Color change outside the area selected
- Color change in the entire drawing

Obviously, if there is no area selected at the moment the tool is selected, the color change is executed on the entire drawing.

## 5.19 Copy



The *copy* instrument allows to copy a portion of design. Enabling this instrument it appear the window of options were to choose the modality of copy.



Picture 9

Executing button



The instrument *Area selection* is used to find the copy area.

The first action of the instrument is to put to disposition a copy of the selected area being overlapped it to that one it originates them.

In the option window appear the initial coordinated and the dimension of selected area.

To move the copy area to destination, it is possible to work in two way:

- click the execution button after selected the coordinated of destination;
- dragging the copied area holding pressed the left button of mouse into the selected box.

The dimension area of copy can be modify clicking the executive button after selecting the new dimension in the box.

In the option window will appear all the copied colors; it is possible to disable the copy of some colors deleting the sign.

Selecting the option “Adapted” the original area will be reduced or magnified. This function disables the function of align and repetition.

After establishing the options you can copy the area clicking the mouse outside of the box of selection or on the executive button.

## 5.20 Mirror

---



The Mirror tool permits the drawing or a part of the same to be mirrored. The mirrored drawing is placed in a box and it can therefore be dragged, even several times, by holding the left mouse button down inside the box. Once the final position is determined, the operation can be concluded by clicking with the mouse outside the box.

The mirroring modes can be changed at will before concluding the operation, oppure sul pulsante di attivazione.

The mirroring modes can be changed at will before concluding the operation.



The Area Select can be used to determine the area in which the mirroring is to be performed.

### **Options**

The following mirroring methods are foreseen:

- Vertical mirroring
- Horizontal mirroring
- Vertical and horizontal mirroring

## 5.21 Rotate

---



The instrument *rotation* allows to rotate a portion of design. After establishing the rotation degree, you have to click the executive key to enable the function.

The rotation can be modified before concluding the execution.

The rotated design will be positioned in a box; you can drag it using the left button of mouse. After choosing the destination, to conclude the operation click outside the box or click on the executive button.



It is possible to use the instrument *Selection area* to determine the rotation area.

***Options***

In the option area will appear the four modality of rotation and the key of execution that is indicated graphically by an arrow.

The first three options allow to rotate the design with follow angles-shot:

- 90°
- 180°
- 270°

The fourth option allows to execute a free rotation. The degree can be choose selecting with the arrow key; you will see immediately the effect on the design if the execute button is already be selected.

You can also add a number between 0 and 365, but in this case if the button execute is already be selected, the rotation will be made only using the arrow key.

# Chapter 6

## CIRCULAR KNITTING MACHINE

In this chapter it will be showed the properties of the patterns for CKM.

### 6.1 Properties

---

You can access the properties of the pattern form “File”→ “Properties”

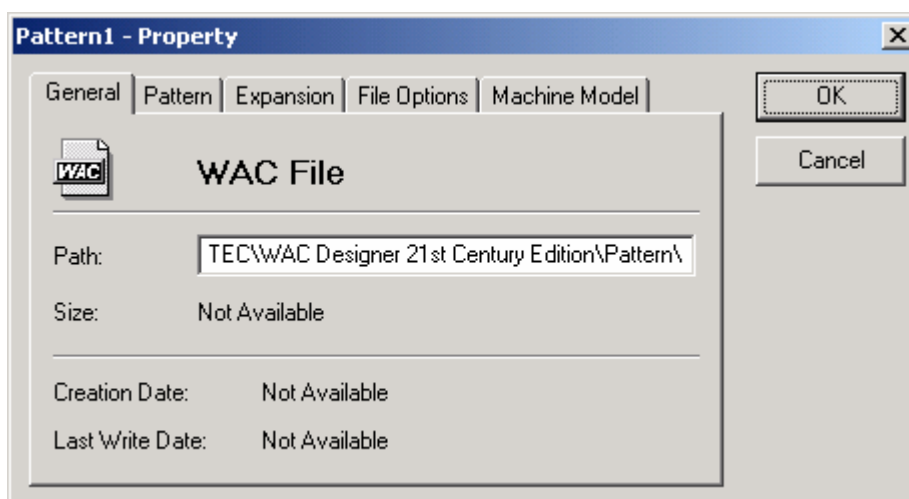
These are the properties:

- General
- Pattern
- Expansion
- File Option
- Machine Model

#### 6.1.1 General

---

In “General” it is possible to see the information about the file, as the dimension, the root, the creation date,...



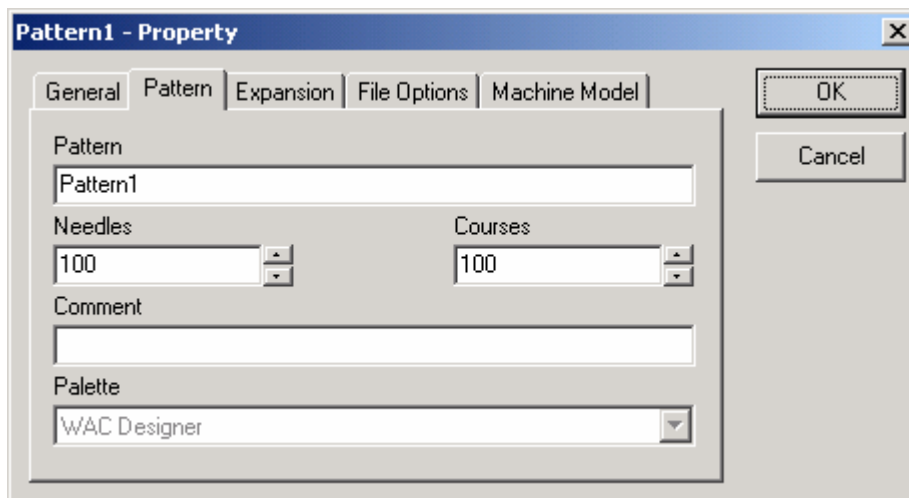
Picture 10

The information can't be changed

.

## 6.1.2 Pattern

On Pattern screen there are the information about the pattern as dimension, name,...



Picture 11

The name of the pattern is used also for expansion file.

So if you change it from Pattern1 into Picture1, the expansion pattern will be automatically renamed into "Picture1:exp".

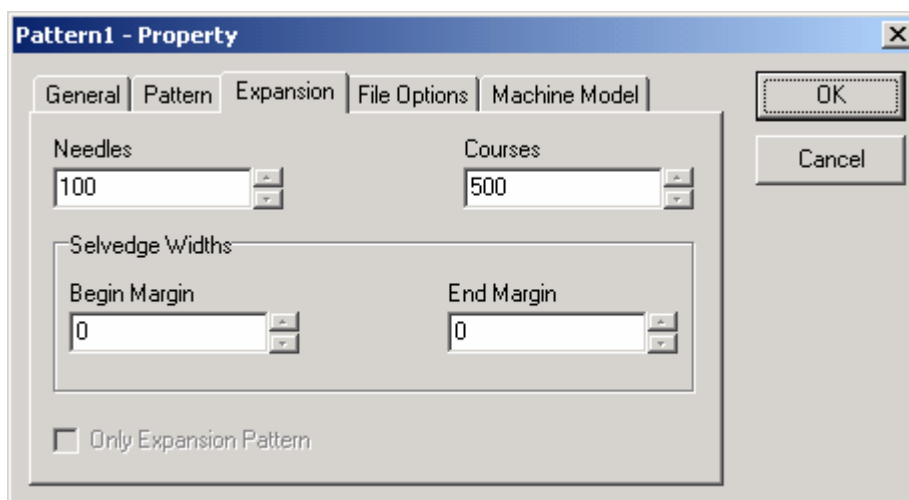
The name must be at least of 8 types.

The values "needles" and "courses" modify only the pattern file.

You can't change them if you have already created the expansion file.

Comment is a free text box.

## 6.1.3 Expansion



Picture 12

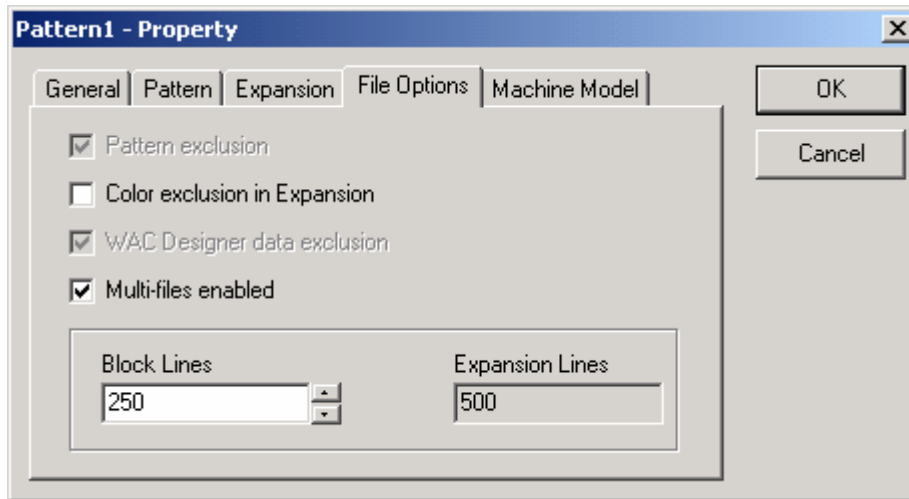
In the "Expansion" page you can find the information about the expansion pattern, as dimension and "selvedge dimension"

The information can't be modified.

### 6.1.4 Option File

---

In this page, you can select which information you don't want to insert in your WAC file and so to solve the problem of disk-size.



Picture 13

Selecting “Color exclusion in Expansion” the index of colors not used in the expansion pattern (usually saved in the WAC file) is set to 0.

With this option, in many occasions we can save disk-size.

When the dimension of the file exceed the disk-size, you can use the option “Multi-files enabled”, which excludes from the WAC file the main pattern and the associated data and can split the lines of the expansion in several files.

In the example of picture 13 the pattern is split in 2 files each of 250 lines.



Using the “Multi-files enabled” option you can lose some data, not necessary for the execution of the pattern on the machine, but necessary for WAC Designer.

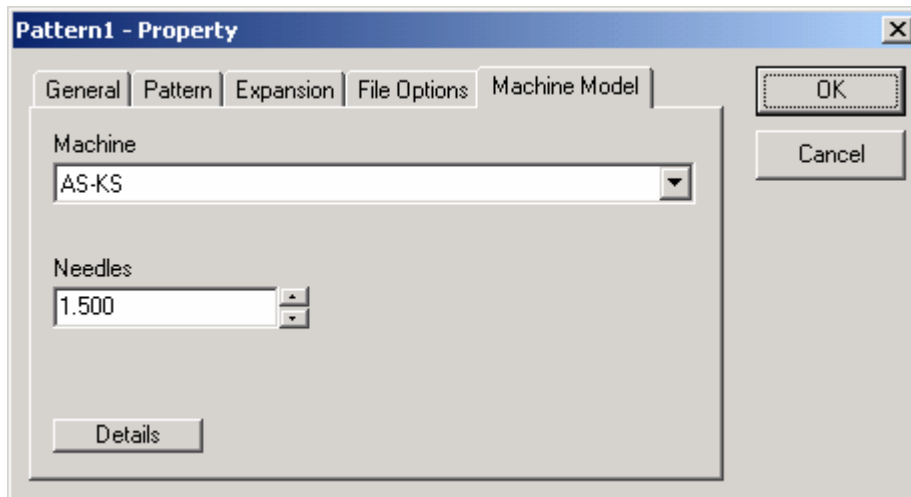
So we suggest to save the file on your hard-disk before split it into many files.

The split file can be opened with WAC Designer, but the pattern is managed as a single expansion pattern.

### 6.1.5 Machine Model

---

In the Machine Model page you can see the machine for which the pattern is been created.



Picture 14

You can change the model and the needles, but after you have to save the pattern. “Details” button access to the detail of the machine model selected.

## 6.2 Machine Model

---

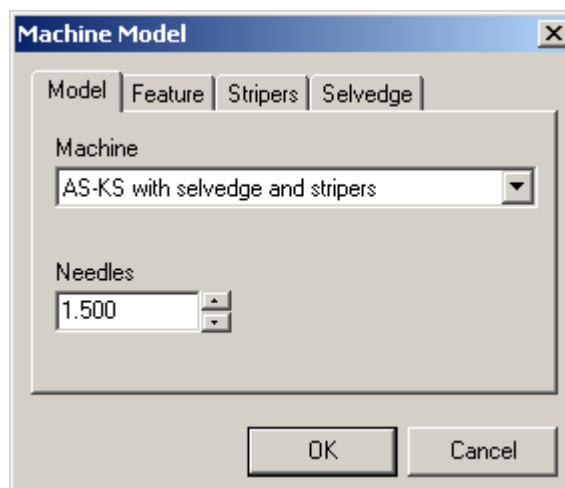
You can change the machine model selecting “ Machine model” from “Utility” menu. The data of machine are disposed as follow:

- Model
- Feature
- Stripers
- Selvedge

### 6.2.1 Model

---

In the model page you will see the name and the number of needles machine.



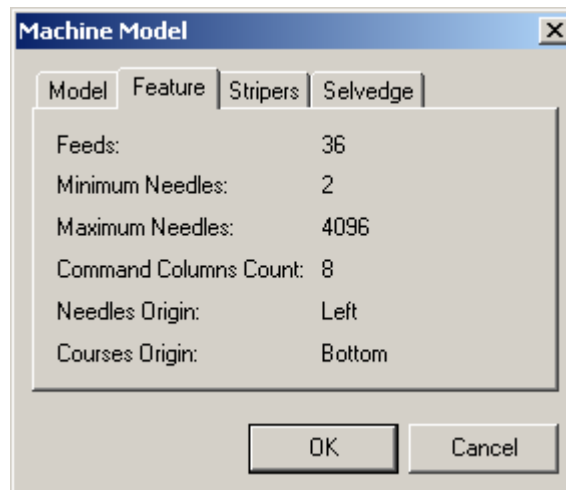
Picture 15

The model can be chosen from the list clicking the arrow near the input box.  
The number of needles can be changed using the two arrow near the box or write the number.  
The value inserted are confirmed after clicking the “OK” button.

### 6.2.2 Feature

---

In the Feature page it is shown some information about machine model.



Picture 16

The command columns count indicate the dimension after the last needle of the expanded design.  
The needle origin can be placed on the left or on the right, while the line origin can on the top or bottom.

The indicated data cannot be modified.

### 6.2.3 Stripers

---

In the Stripers page you can see if the stripers are enabled and the number of stripers for each feed.  
The information are not modifiable.

### 6.2.4 Selvedge

---

In the Selvedge page it is indicated if in the expanded design is enabled the function.  
You can see the minimum and maximum value of the area.  
The information are not modifiable.

## 6.3 Expansion

---

After having selected the pattern, start the expansion selecting “Expansion” from “tools” menu.  
Choosing the couplings of the colors and the options, through buttons is create a new pattern called

expanded pattern, were beyond to the subdivision of pattern line, it is possible to add automatically some tuck points, necessary to solve textile problem or to make some special effects.

The created pattern will be saved together with the original one. To identify the expanded pattern, Wac designer gives the format “:exp” to the expanded pattern. The expanded pattern is always side by side the original pattern.

---

### 6.3.1 Colors table

---

Wac Designer expands the pattern with the colors indicated from the user on the table on the left top of the expansion window.

The table is divided in column in accordance with the numbers of stripers.

If the machine doesn't have the stripers on the table there will be only two column, one fix that indicate the used feed for each line, and one that are indicated the colors.

If the machine has stripers on the table there will be so column as stripers.

To add colors on the table you have to use the function “Drag & Drop”; you can insert colors from the colors table and from the original pattern. Inside the color table, it is possible to change the position of the color using the function “Drag & Drop”.

Clicking the right mouse button on the color table, it will appear a menu were it is possible to remove a single color, all colors in a line or all colors of the table.



The expanded pattern is saved as “WAC File”. If the vertical origin is bottom, the expansion of pattern will start from bottom and also the colors sequence. The user can change the sequence clicking the option “Color expansion from Top” if he want to expand from the top. In any case the pattern will be saved on “WAC File”.

---

### 6.3.2 Pattern color list

---

On the start expansion window WAC Designer checks the pattern and select all the used color. The grey color of the surrounding color area of the list indicate the correct allocation of colors.

---

### 6.3.3 Expansion area

---

On the start expansion widow WAC Designer set the horizontal and vertical limits to include all the pattern area.

The user can select only a portion of the design adding the value or using the arrow to increase or decrease.

---

### 6.3.4 Tucks point rules

---

During the expansion, WAC Designer automatically inserts some tucks point that are rules from an area called “Tucks Rules”. The value indicated as follow:

- “Interval” indicates how many point separate a tuck from the next one.
- “Width” indicates how many tucks point in sequence to add.

- “Step” indicates how many number of movement point of tucks from pattern line and next one.

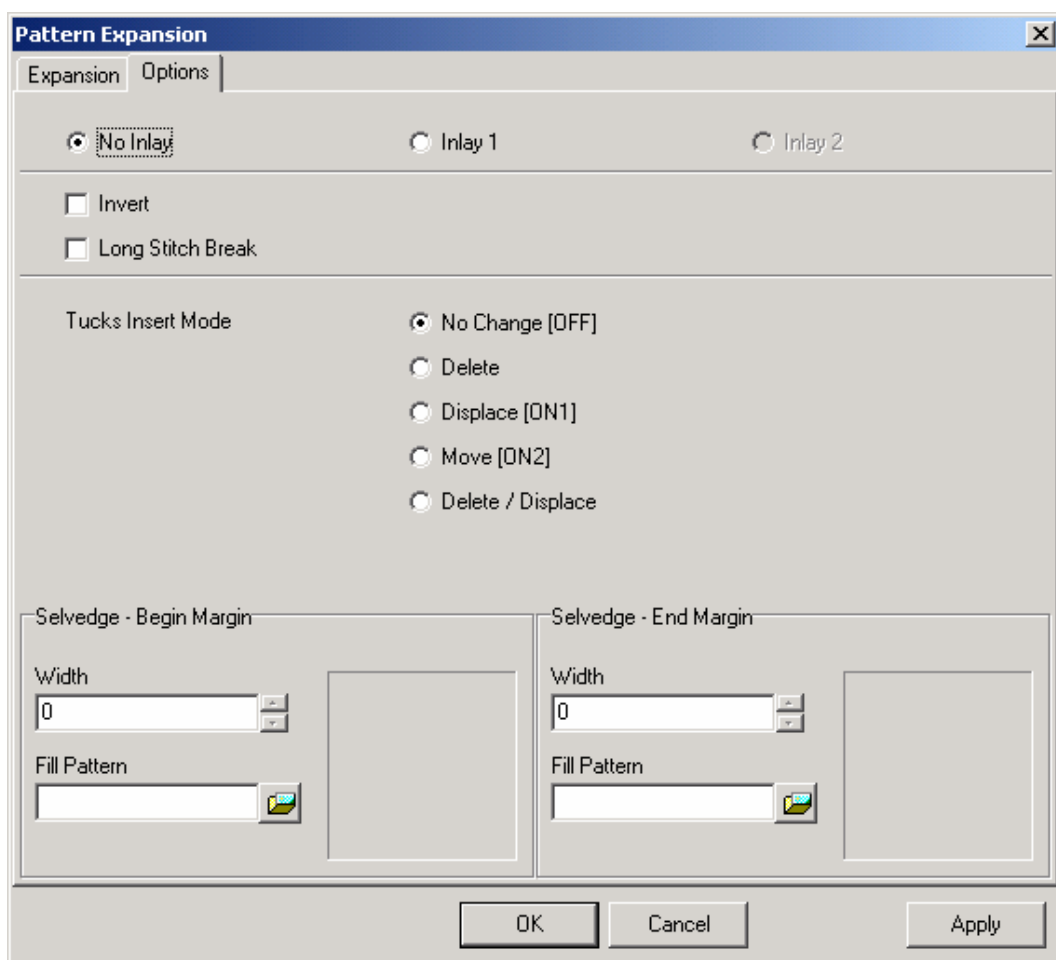
The user can define the courses from tuck point line.

The option with two vertical bar disables the value given to “Step”.

With next two options you increase or decrease the tucks point position with value given to “Step”.

### 6.3.5 Expansion modality “No inlay”

In the “Option” page of expansion window you can define some modality to use during the pattern expansion.



Picture 17

With “No Inlay” modality each pattern line is expanded in many lines how many are the feeds set in the colors table (see paragraph 6.3.1).

In the generated rows are inserted the colors related the feed, all the other colors are replaced with the color relating the out of work. Moreover are inserted the tucks points in consideration of the rules.

The available option with this modality change the expansion as follow:

- Enabling the option “Invert” the pattern is turn upside down horizontally and vertically

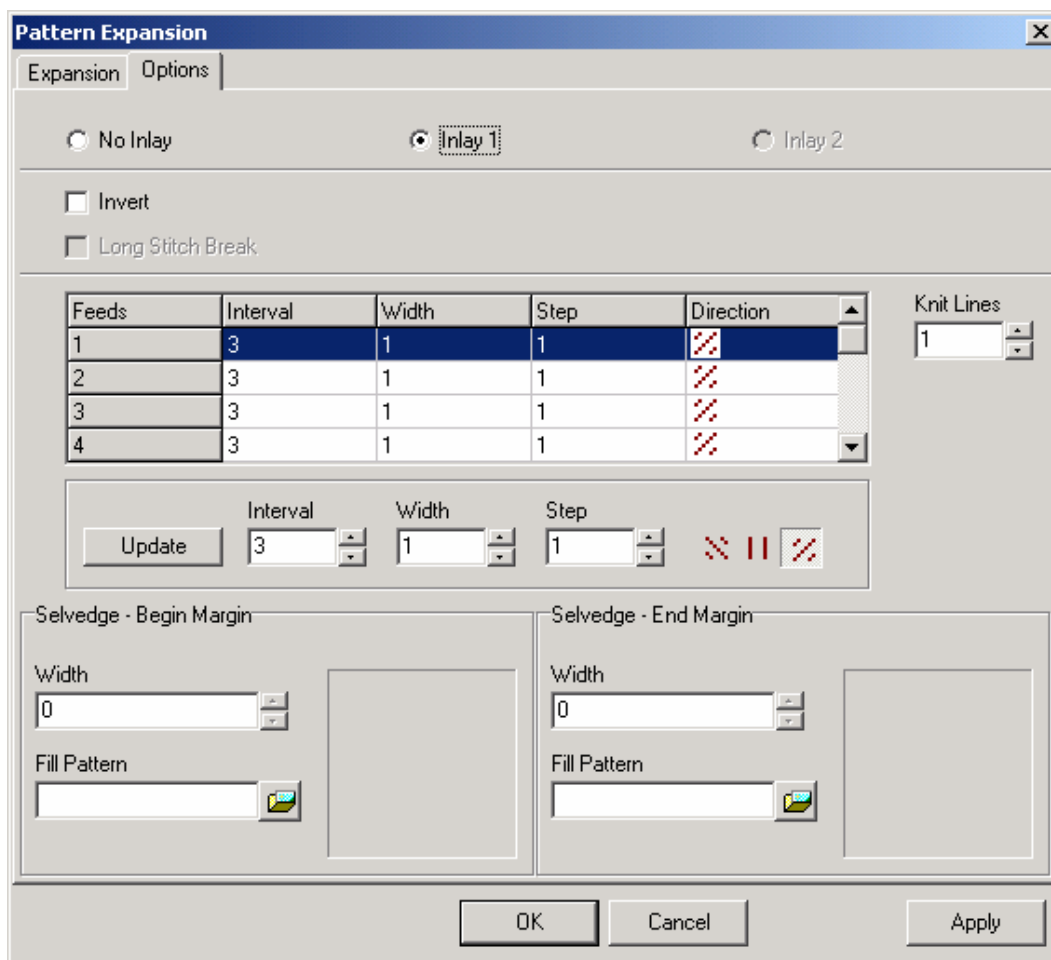
- The option “Long Stitch Break” erase the long point. Technically the tucks point and the welt point are exchanged with work point if the previous line of the needle correspond a work point of the same feed.
- Changing the modality of tucks point adding, it is possible to deal the point that they would come inserted in particular position.

The previewed modality are as follow:

- No Change [OFF] The tucks point are inserted in accordance with parameters defined on “Expansion” page (see paragraph 6.3.4)
- Delete The tucks point are not inserted in lines that are not present work points
- Displace [ON1] Tucks point near work point, if possible are moved from 1 needle on the right or on the left, otherwise they are erased.
- Move [ON2] Tucks points near work point, if possible are moved of two needles on the right or on the left, otherwise they are erased
- Delete / Displace The option Delete and Displace [ON1] are applied contemporaneously

### 6.3.6 Expansion Modality “Inlay 1”

The pattern can be expanded also with “Inlay 1” modality.



Picture 18

Also for this expansion modality is available the “Invert” invert (see previous paragraph). It is possible to give a rules to each feed of colors table. To modify the values proceed as follow:

- Select the feed line clicking inside of a line box
- Modify the value on the bottom of the table
- Update tables value clicking the key “Update”

With this modality it is possible to define the number of expansion line applied to each main pattern line (see option “Knit Lines”).

### 6.3.7 Selvedge area definition

---

During the expansion WAC Designer, if the user need, add a selvedge opening horizontally a pattern. The data to enable the selvedge are inserted on the machine selection; for the machine were this selection is note preview the option is disable. In the machine data , are included the value limit of selvedge, minimum and maximum, and the initial amplitude.

If the amplitude value is different then 0, on the expanded pattern is reserved a colored wrap representing the out of job. The point of area of selvedge are automatically substituted, during the expansion phase, from a sequence defined from the user on a particular pattern (see chapter 7). The selvedge pattern must be associated clicking the key “Fill Pattern”.

The user can define a selvedge area on the top, bottom, left or right side.

### 6.3.8 Key Apply

---

Through the key “Apply” is possible to execute the pattern expansion, a variant of current expansion, without that the expansion window is closed.

## 6.4 Visualization modality

---

An expanded pattern can be seen as follow:



the pattern is shown in classic mode, the point is represented from colored pixels.



the pattern is shown in “Tremelloni” mode, the points are represented with 3 different symbols that are: in job; tucks and out of job.

It is possible to view in this modality only if the zoom factor is higher then level 1.



the pattern is shown in “French” mode, the points are represented with 3 different symbols that are: in job; tucks and out of job. It is different from “Tremelloni” mode because the symbols are not the same.

---

## 6.5 Colors

---

Beyond to the reduced palette (see paragraph 3.1) WAC Designer allows to choose a colors palette composed by 256 colors. The 256 colors palette can be enabled from main menu or clicking F12 key.

The colors selection is made clicking the left and right mouse key. It is not necessary to close the 256 colors palette to use the choosed colors.

On the window, it is possible to see the used colors for the execution of the tucks point and out of work.

---

## 6.6 Control record

---

After having expanded a pattern, it is possible to change the command of the expansion phase that automatically WAC designer makes.

The user has to enable the editor of "Control record" from main menu or clicking F5 key.

Here you will have some keys through which it is possible to move, delete, modify and add a new command.

To modify a command you have to select it using the mouse click. The selected command is written with bold character. The command modify have to be executed in the appropriate section. The modification of command parameters, are reported on the command list only after clicking to the update key.

To confirm any variation to command, the window is closed using the key "OK".

---

## 6.7 Stripers

---

If the user select a machine with stripers, the WAC Designer, on the expanded pattern, adds a wrap at the end of the pattern dedicated to command of pattern line.

The color with index 0 usually indicate that no command are enabled. A line of this wrap is automatically fill up with stripers colors in use on the line. The color index depend of combination of stripers in use. The user can modify directly on the expanded pattern the commands colors; sometimes WAC Designer gives an editor of stripers command.

In this editor is reported the expanded pattern without the command wrap.

Near the pattern there are some columns that simplify the analysis and the modification of stripers commands.

On the "Color" column are reported only the colors corresponding the command.

On the "Select" column is possible to execute a command group selection that is repeated to the end of the pattern (from the top to bottom); to select this function press "spread" button.

The "Stripers" column is divided in so many columns as the commands to each line.

The numbers indicate the stripers number and letter "F" indicate the authorization code.

The stripers corresponding to command are shown in bold.

To modify the command click the stripers icon or the authorization code; the command color is updated automatically.

To confirm any variant made to commands, the window must be closed with key "OK".

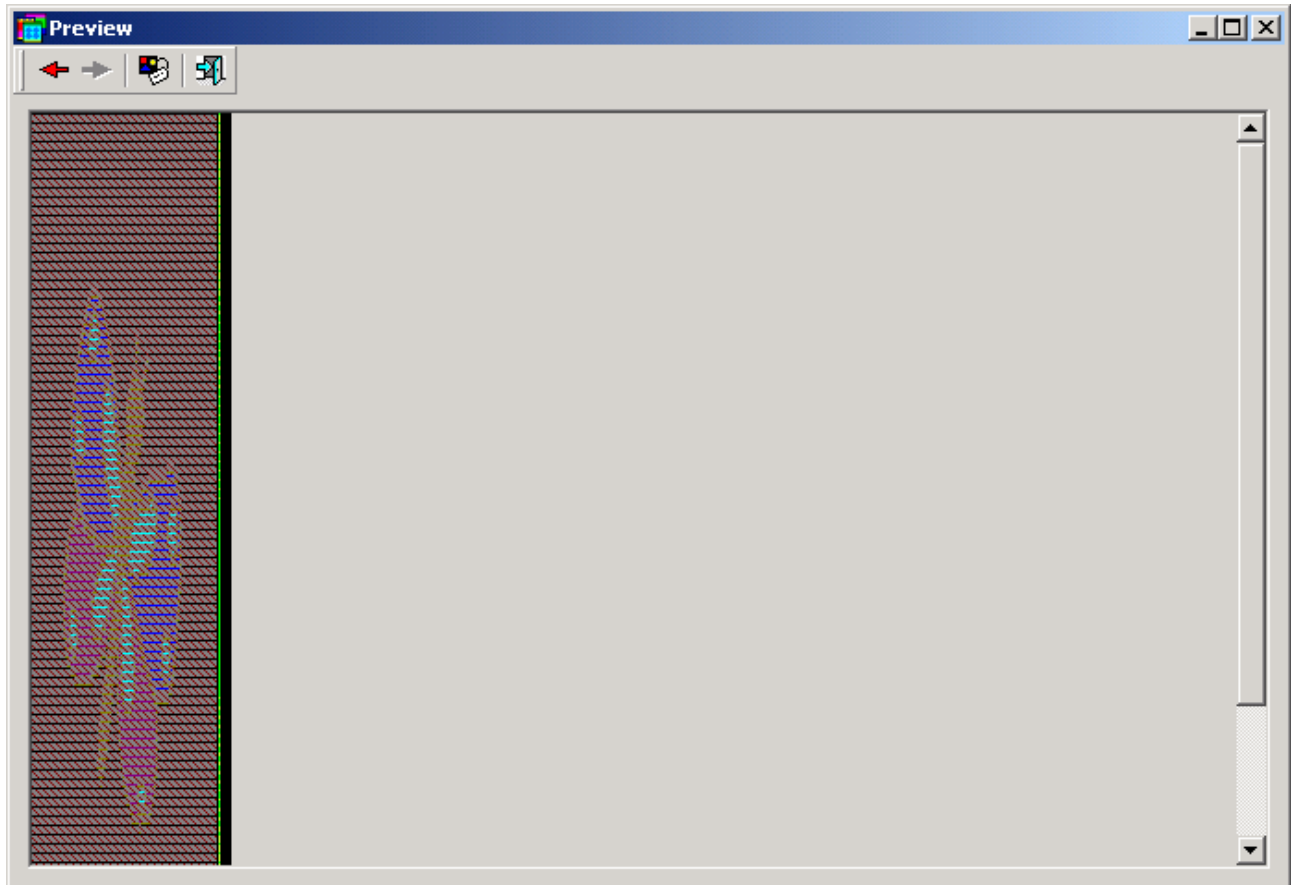
## 6.8 Preview

---

Opening a file, WAC Designer open the typical window of Windows files, adding an area where it is shown a pattern preview.

In this window a part of the pattern will fit all the available area for the preview.

To see it with the real dimensions, the user has to press the appropriate key with a mouse click.



*Picture 19*

For “WAC File” the preview shows the expanded image and the original one.

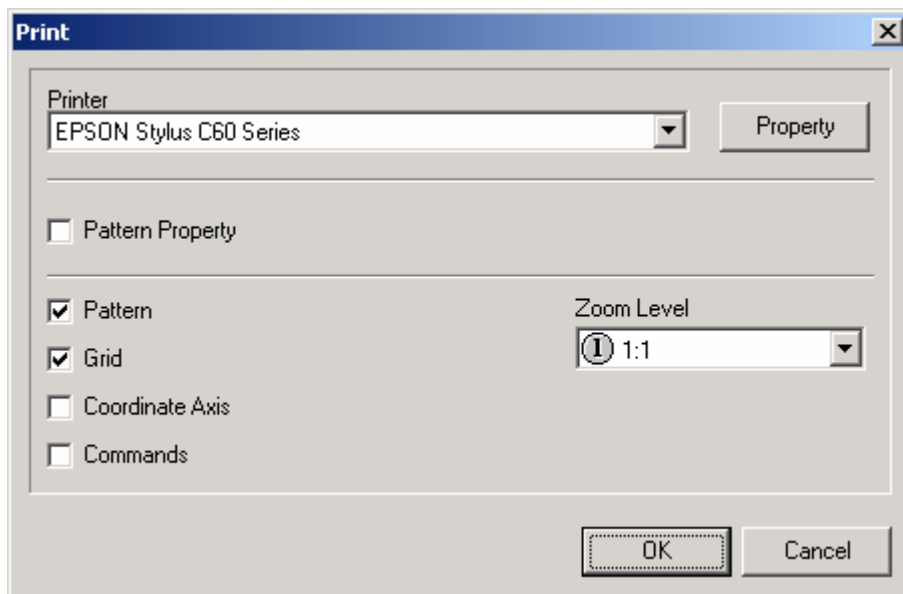
It is possible to select the images using the arrows of tool bar.

Beyond the arrows in the tool bar it is available a key that open the property of pattern and a key to close the preview window.

## 6.9 Print

---

Printing a pattern, WAC Designer show a window where it is possible to select some print options.



Picture 20

It is possible to select a printer from the system and modify the property of printer.

The user can choose to print the pattern, the property of pattern or both. Printing the pattern is available follow options:

- Grid                      Print the grid if the zoom level allows it
- Axis                      Print at the side of the pattern some info that allows to calculate the  
Coordinates              number of needle, with numerical indication on both sides
- Commands              Print of the command. This function is enable only if the machine have  
   strippers.

In this window it is possible to define with which zoom level the pattern must be print.



The visualization of pattern (see paragraph 6.4) in use during the activation of printing window, show the modality of pattern printing.

WAC Designer execute the print of the showed pattern; in the pattern case, composed by expansion and pattern, the user have to select the area to print and then print it.

# Chapter 7

## PATTERNS FOR FILL AND SELVEDGE

In this Chapter you will see the characteristics of pattern created for fill and selvedge. The pattern for fill can be used with the “Fill” tool to be placed in a uniform color area. The pattern for selvedge can be used during the expansion phase of a pattern to be placed on the defined selvedge area.

### 7.1 Property

---

You can enter to pattern property for fill and selvedge selecting “Property” from “File” menu. The property are divided as follow::

- Main
- Design

#### 7.1.1 Main

---

On the Main page is shown the property of file, the dimension and date of creation and last modify. The dimension and date data are not available till the file is saved.  
I dati mostrati in questa pagina non possono essere modificati.

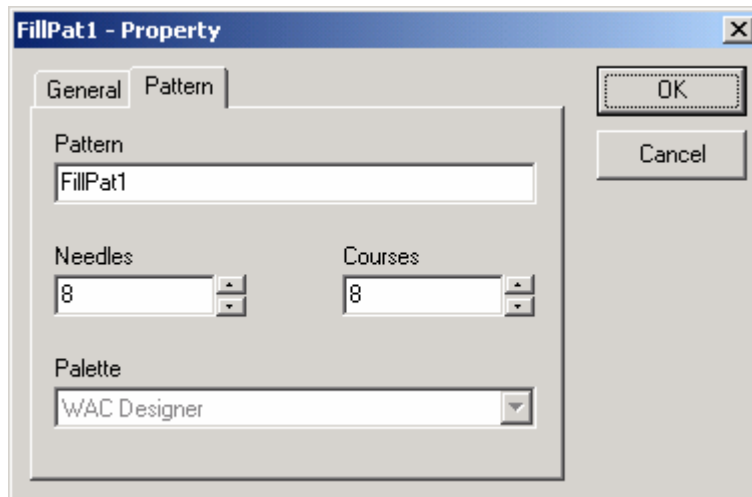
#### 7.1.2 Design

---

On the design page is shown the pattern characteristics, the name and the horizontal and vertical dimension.

The name can be change and for the fill and selvedge pattern it is possible to indicate names without limits.

The dimension indicated in needle and courses can be modify.



*Picture 21*

## 7.2 Print

Printing a pattern WAC Designer show a window where it is possible to select some printing options.

The print options for fill and selvedge pattern are the same then the “circular machines” (see paragraph 6.9).

The option “Commands” is always disabled because in the fill and selvedge pattern is not available the area dedicated to commands.

# Appendix A

## ERROR MESSAGES

### A.1 Protection key

---

WAC Designer can be used only if the user have a protection key.

In the Cd-rom it is available the driver for protection key installation. Without drivers the application cannot enter to protection key.

In case of problems, WAC Designer will show on a window one of follow sentence:

- Key Setup failed           Generic error. Maybe the driver is not installed
- Key Data Access failed   Access data error. Maybe the driver is not correctly installed.
- Key not found             Key not inserted correctly.
- Read Key Error            Read error. The key may be damaged.
- Program not enabled      WAC Designer disable. The key must be substituted or must be inserted the one supplied with the cd-rom.
- Key access finished      This message appear if WAC Designer was in trial and inform that the number of access are finished.
- Rest access count:        This message appear if WAC Designer was in trial and inform the number of access available.

### A.2 Video Resolution

---

WAC Designer the video setting to 256 colors or more. If the resolution is less then 256 colors, before closing the program will appear:

Invalid Color Resolution: WAC Designer Application needs more than 256 colors.